

A C A C I A   A T   M A Y F A I R

# The Windsor

TWO-STORY RESIDENCE

4 Bedroom – 3 Bath – 2-Car Garage | 2,447 - 2,503 SQ. FT.

OPTIONS: Den, Master Bath Spa Shower, California Room, California Room  
with Home Management Center/Pantry or Tech Center



*Preliminary*



## THE AMERICANA ELEVATION

*Optional Brick  
Accents Available*



## THE SONOMA ELEVATION

*Shown with Optional  
Stone Accents*



## THE COTTAGE ELEVATION

*Shown with Optional  
Stone Accents*



*Elevations depicted in the brochure are an artist rendering and do not necessarily reflect standard elevation features, landscaping, lighting, entry or garage doors. All stonework is an option.*



The Windsor TWO-STORY RESIDENCE

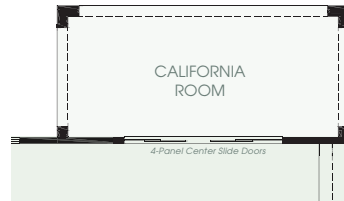
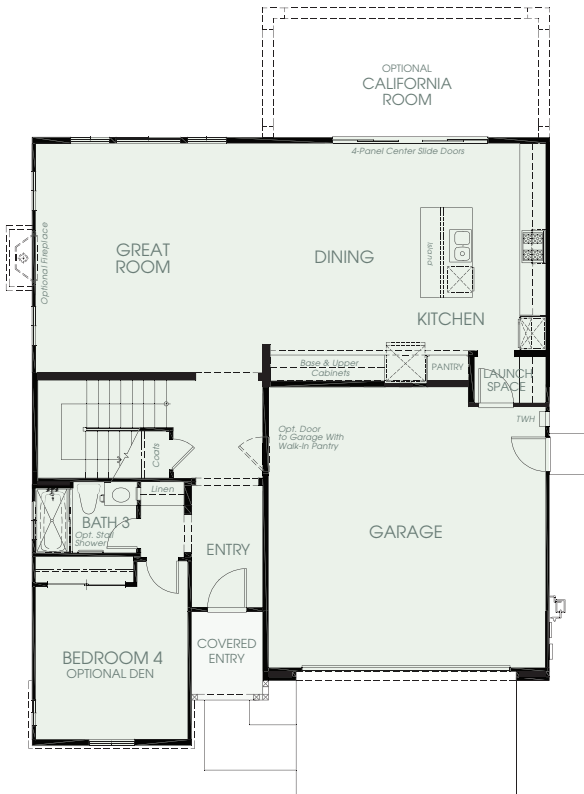
4 Bedroom - 3 Bath - 2-Car Garage | 2,447 - 2,503 SQ. FT.

OPTIONS: Den, Master Bath Spa Shower, California Room, California Room with Home Management Center/Pantry or Tech Center

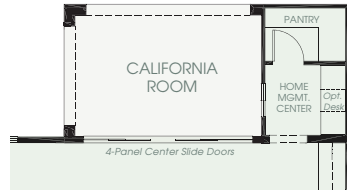


Preliminary

LOWER LEVEL



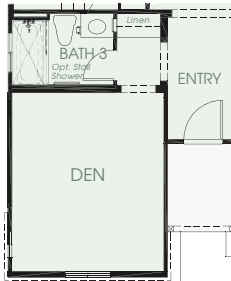
OPTION: California Room



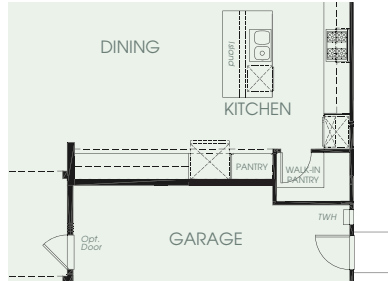
OPTION: California Room with Home Management Center and Walk-In Pantry (Adds 56 Sq. Ft.)



OPTION: California Room with Home Management Center (Adds 56 Sq. Ft.)



OPTION: Den in lieu of Bedroom 4



OPTION: Walk-In Pantry and alternate Garage Door

FLOOR PLAN | AMERICANA ELEVATION



In an effort to continuously improve our product, we reserve the right to change elevations, specifications, materials, and price without prior notice. Variations in the floor plans and elevations may exist and square footages are approximate.

Broker # 01112962

A C A C I A   A T   M A Y F A I R

# The Windsor

TWO-STORY RESIDENCE

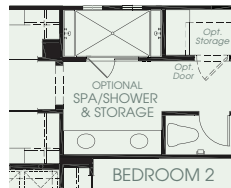
4 Bedroom – 3 Bath – 2-Car Garage | 2,447 - 2,503 SQ. FT.

OPTIONS: Den, Master Bath Spa Shower, California Room, California Room with Home Management Center/Pantry or Tech Center



Preliminary

## U P P E R   L E V E L



OPTION: Master Spa Shower & Storage



FLOOR PLAN | AMERICANA ELEVATION



*In an effort to continuously improve our product, we reserve the right to change elevations, specifications, materials, and price without prior notice. Variations in the floor plans and elevations may exist and square footages are approximate.*

Broker #  
01112962